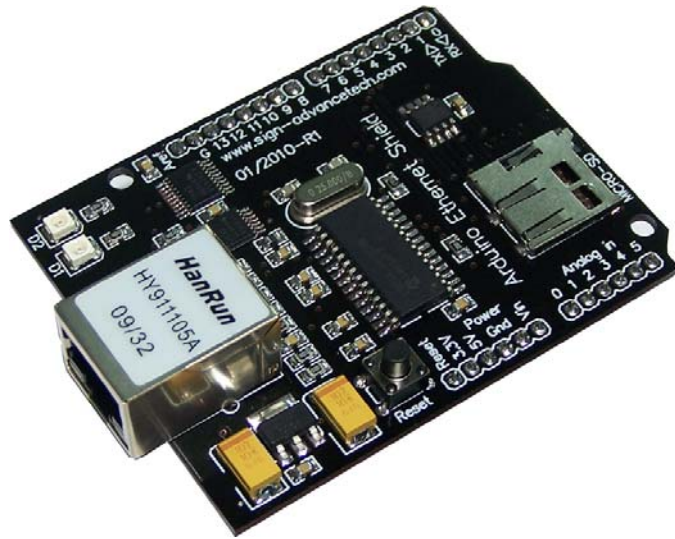


Arduino ENC28J6-M Ethernet Shields™



Overview

The **Arduino ENC28J6-M Ethernet Shields** Board is an Ethernet demonstration board for evaluating ENC28J60 stand-alone 10Base-T Ethernet controller. It is an expansion board compatible with the Arduino Development board.

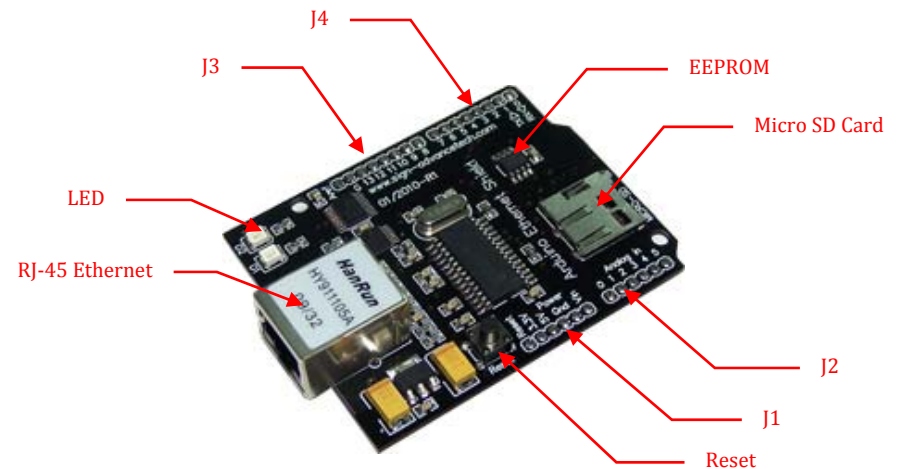
Features:

- ▶ ENC28J60 Ethernet Controller with 25 MHz oscillator and integrated, magnetic RJ-45 connector (See device data sheet ENC28J60 information)
- ▶ ENC28J60 Ethernet 10BASE-T RJ-45 connection interface
- ▶ Micro SD Card
- ▶ EEPROM 32KByte (25LC256)
- ▶ Two LED User define and MicroSD card detector.

Please see reverse side for schematic.

Interface supported:

- ▶ used the SPI module Interface



Arduino ENC28J6-M Ethernet Shields Schematic

