

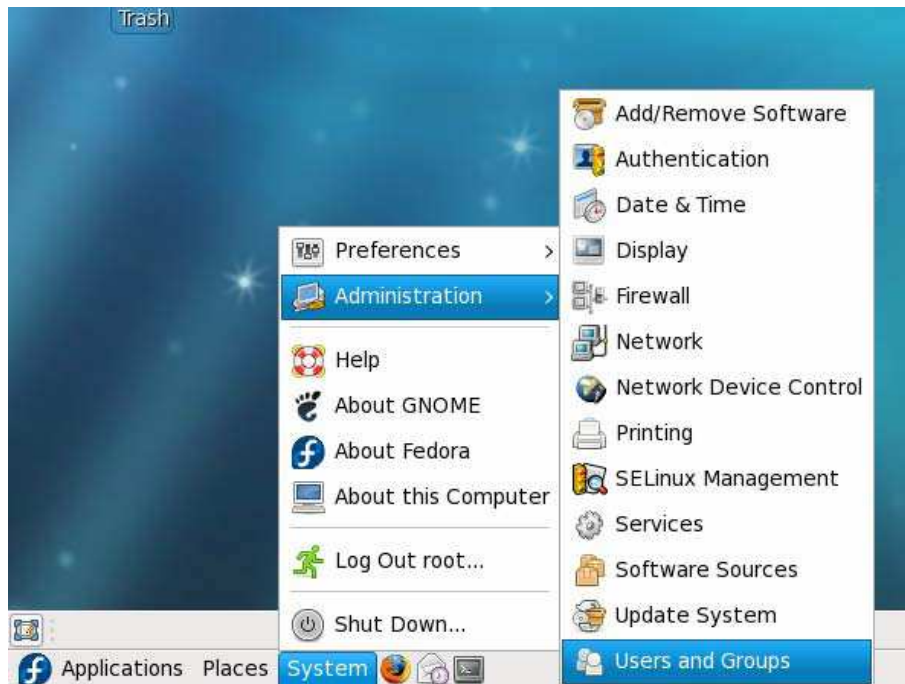
## 5.2 Common settings and services

Present introduce some commonly used settings and the development of services, a lot of Linux commands is also need to know, Linux user can look at this book.

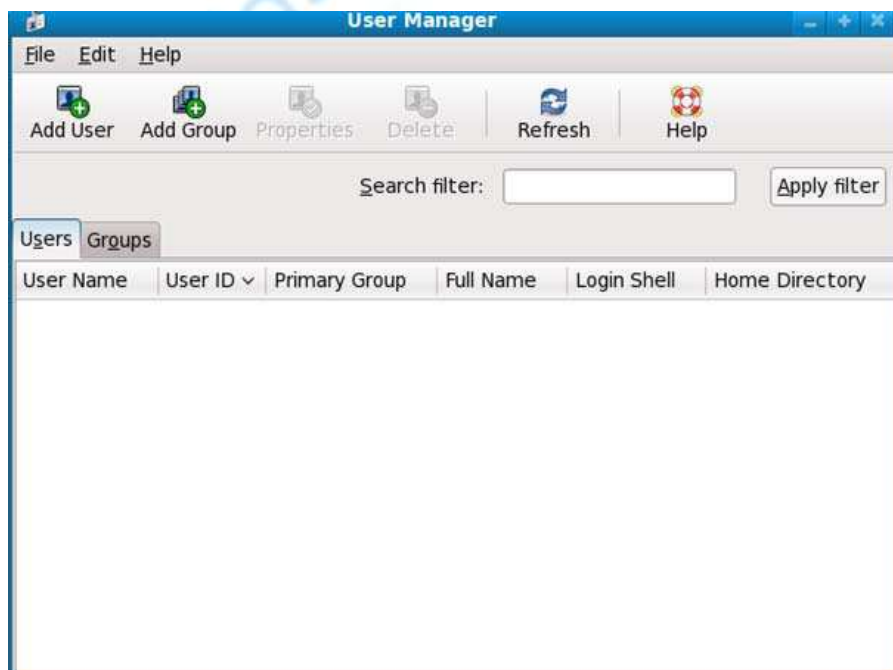
### 5.2.1 Adding New User

For the development, we usually create a normal user privileges, as follows.

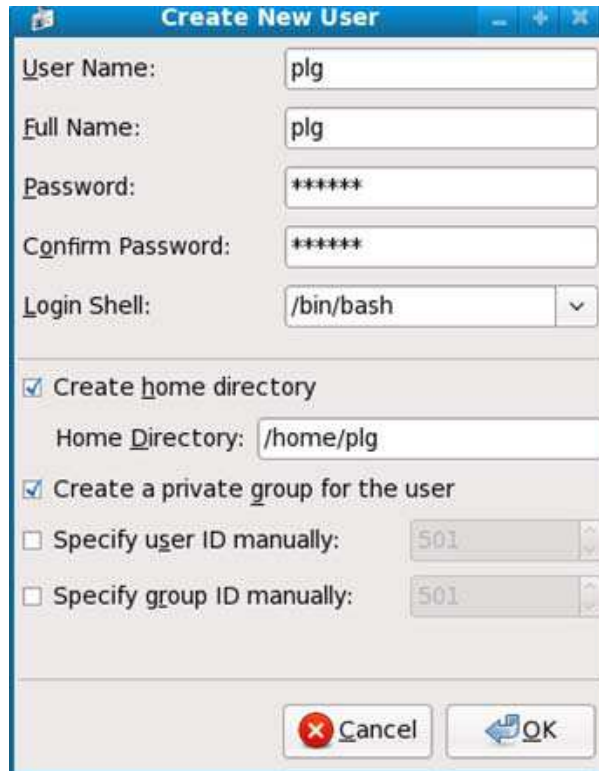
Step 1: Open the menu and select "Users and Groups" by figure:



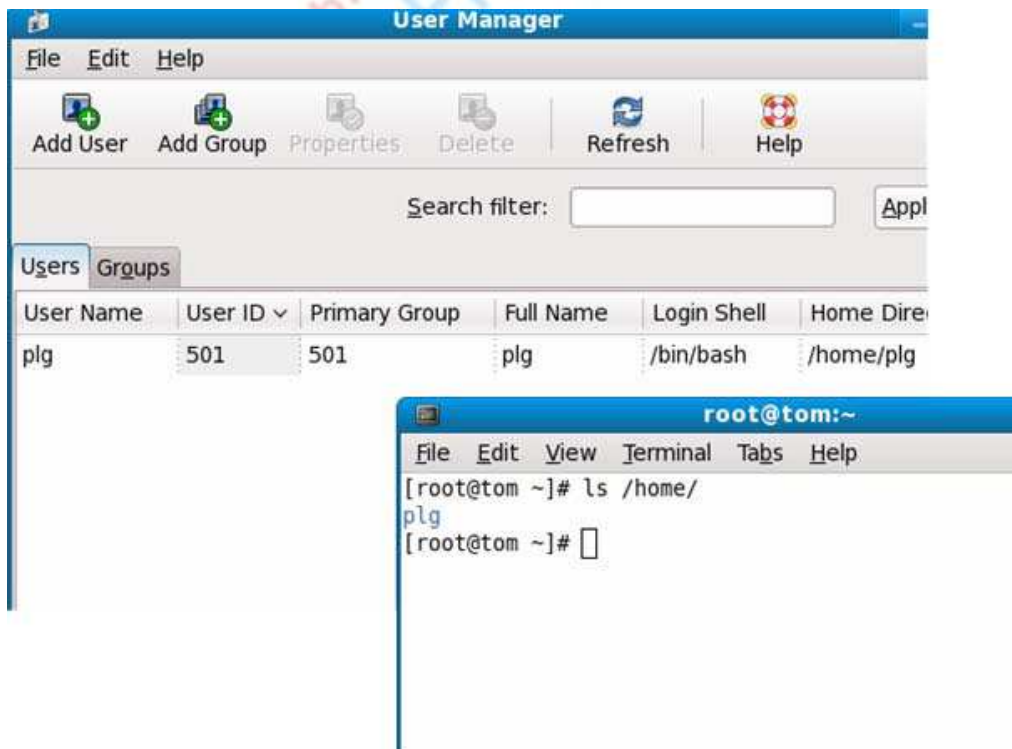
Step 2: User Manager window appeared.



Step 3: At toolbar click "Add User" to add a new user, and set the password:



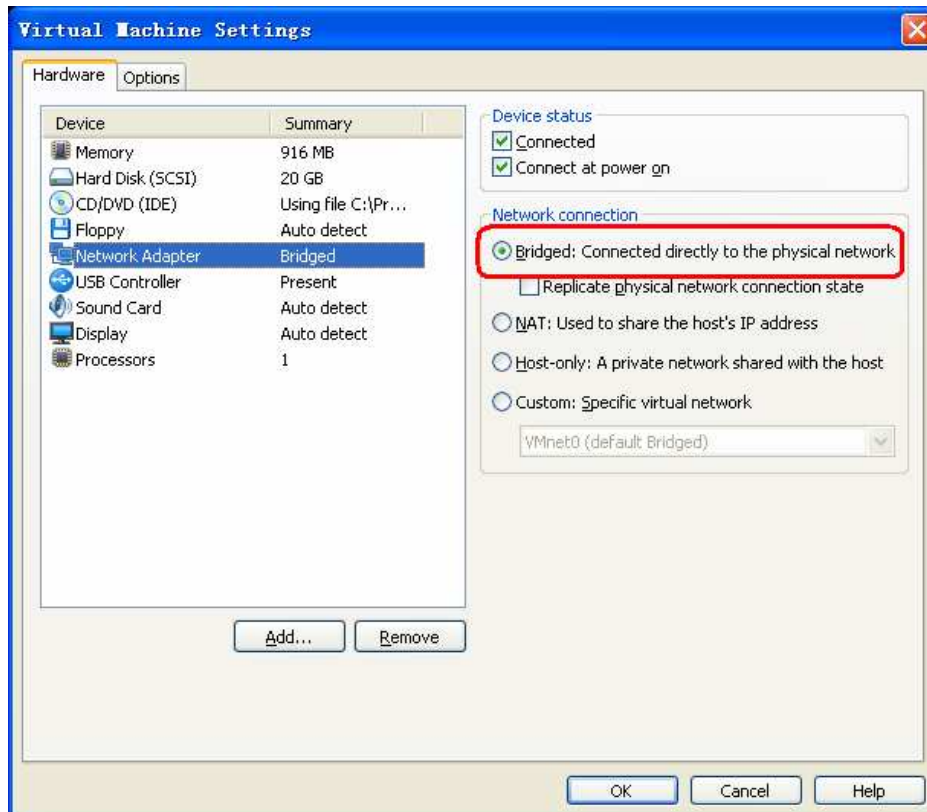
Click "OK" to return, you can see plg user, while the /home directory also increased plg user directory, as shown:



### 5.2.2 Access to Windows filesystem

Whether you are using virtual machine or real Fedora 9 system, can easy access to Windows shared files, provided that network between systems are interconnect.

Tip: To use the network in a virtual machine, the easiest way is to set the “Guest” network connection as “Bridges” mode, as shown:



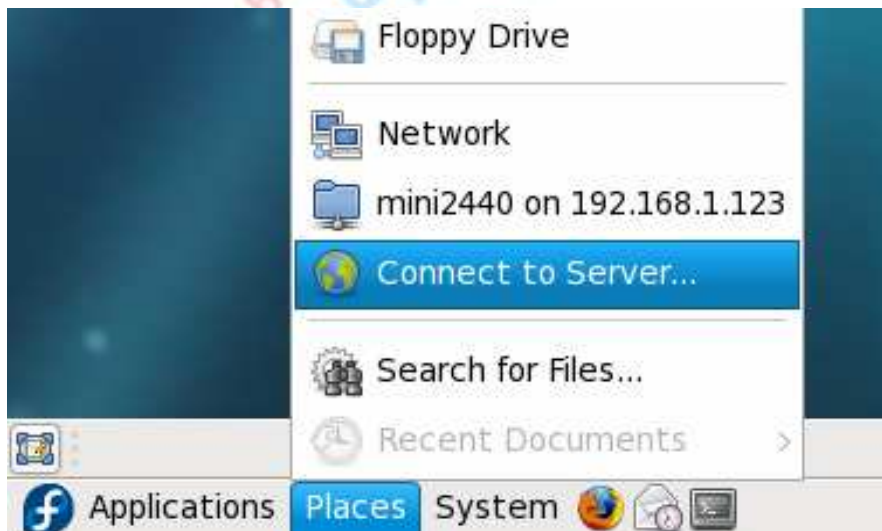
Thai  
 On-line Electronics

Access to the Windows system to share files as follows:

Step 1: Set up shared folders in Windows “share\_f9” (for example).



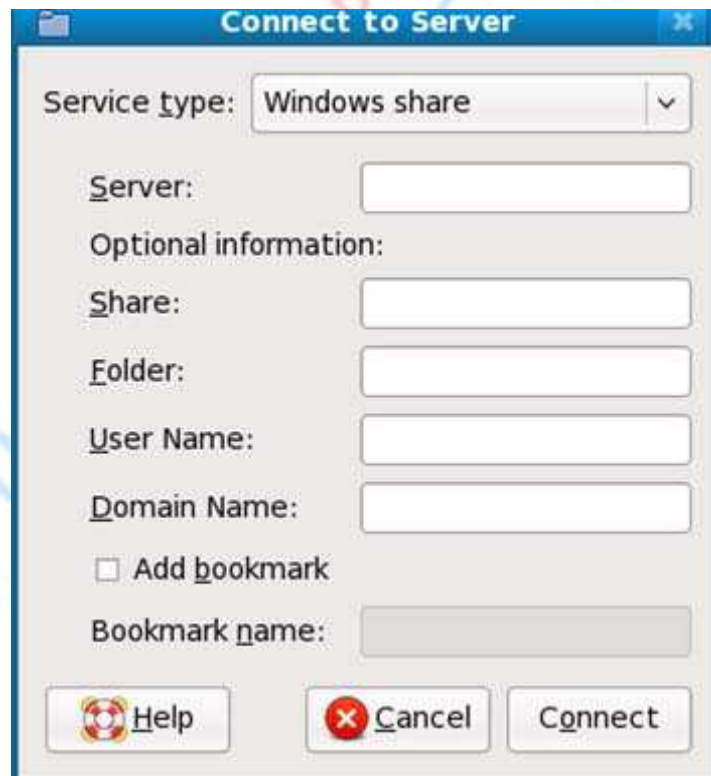
Step 2: In the Fedora 9 system shown in operation:



Opened window by figure:



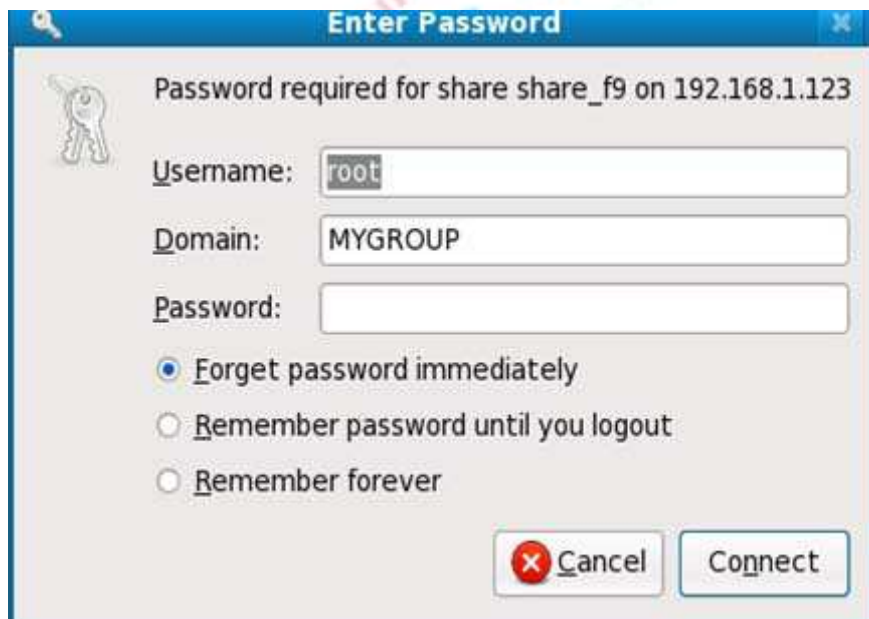
In the Service type list, select "Windows share", as shown:



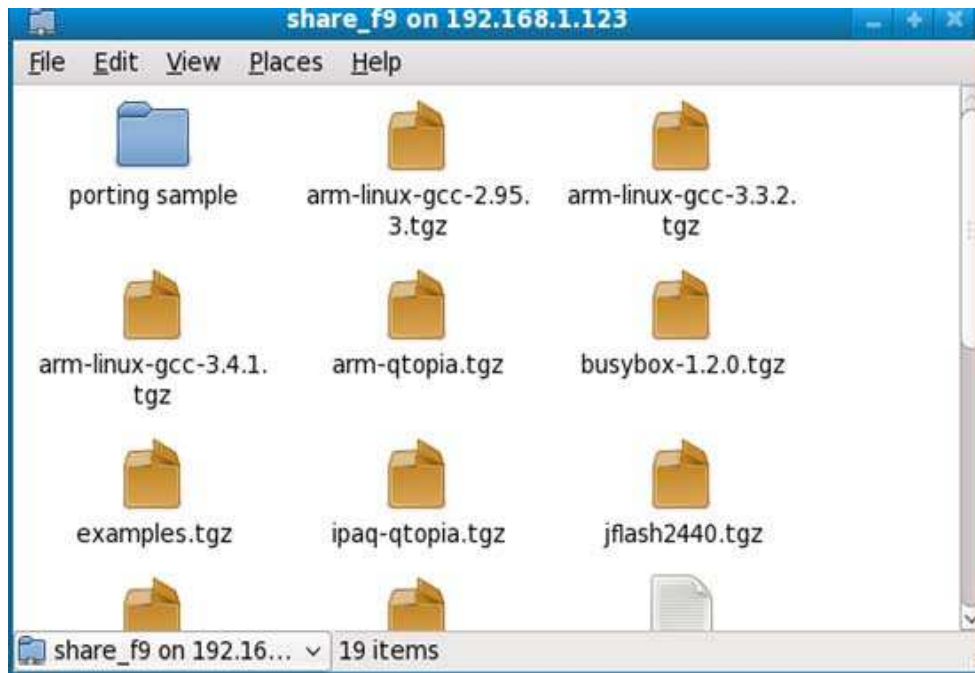
Enter the Windows IP address hosting to share and shared folder name:



Click "Connect", the following prompt will appear:

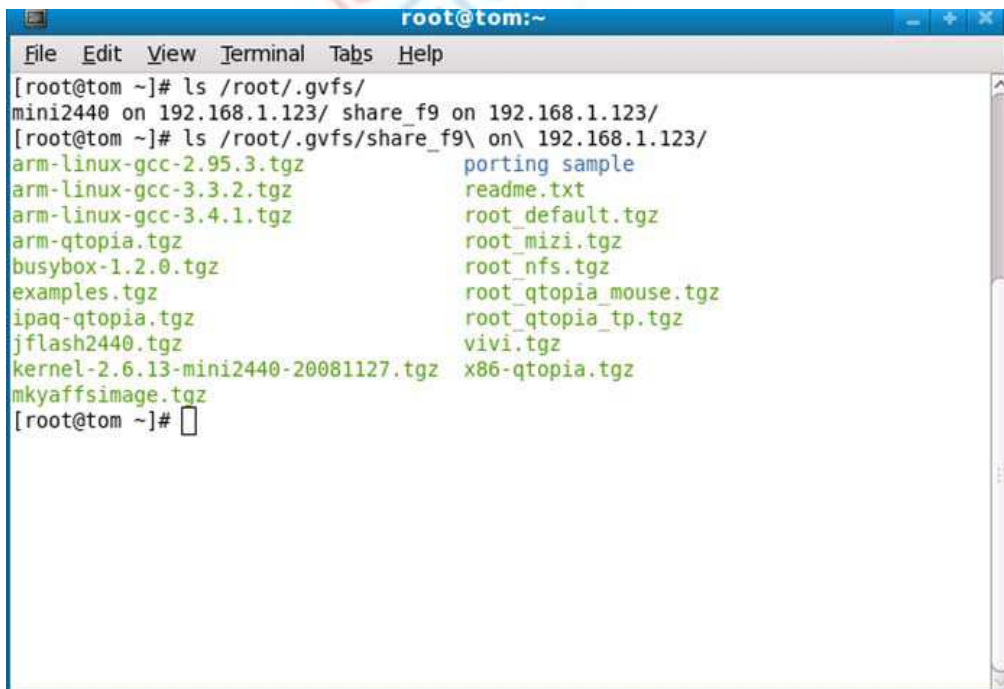


Without regard to, direct click “Connect” to, you can see the contents of share files in Windows, and in this you can operate the same as other directories to use it.

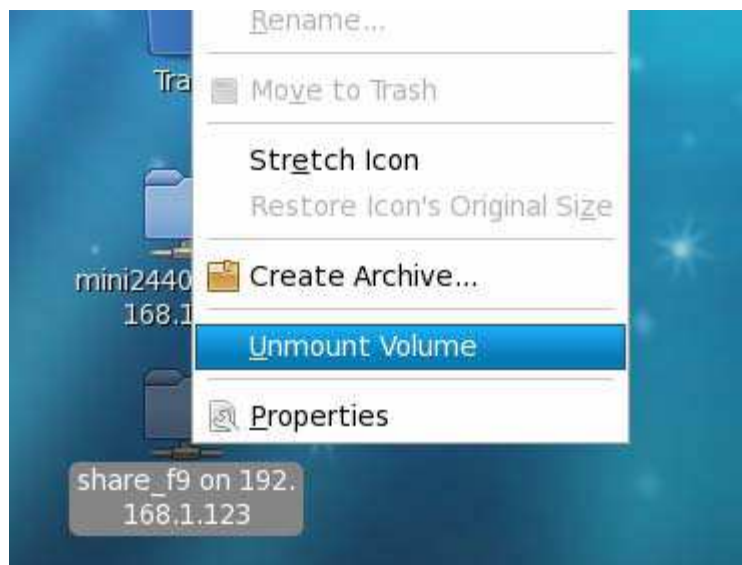


If you want to use the directory on the command line, you can do:

Note: In the console, TAB key is a good use of tips.



Order to disconnect the shared directory, as long the shared folder on the desktop, right click and select "Unmount Volume", figure shows the operating of it.



Enable Your Design  
ThaiEasyElec.com  
On-line Electronics Shop for Embedded System